

UPDATING FIRMWARE THROUGH RS485

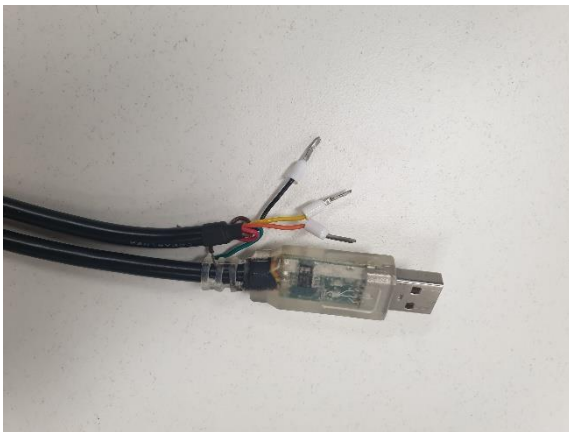
Author: Felix Sng

Updating Firmware Through RS485

Important Note: Please install the Driver for the USB to RS485 cable.
<https://sync.netoverdrive.com.au:510/shares/file/d8ed1b676fcdb4/>

You will need:

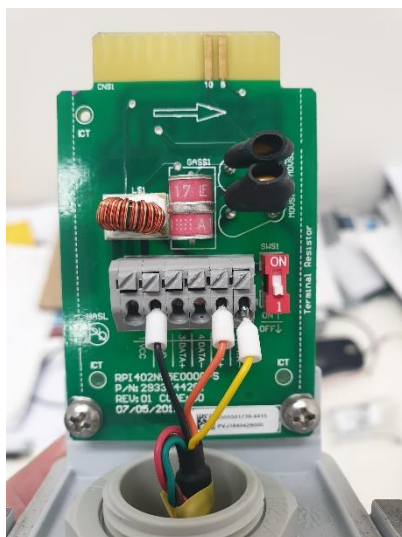
RS485 TO USB



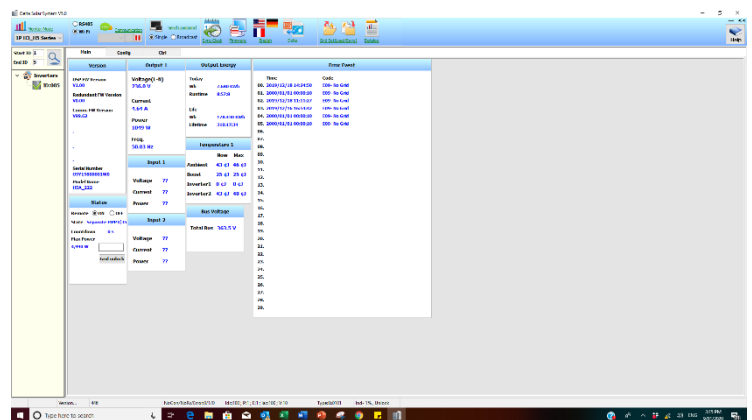
WINDOWS LAPTOP



CONFIGURATION
OF RS485 ON
COMMUNICATION
MODULE



DSS SOFTWARE



Updating Firmware Through RS485

Please Download HEX files for the update:

Model	Type	Link
Solivia	2.5	https://sync.netoverdrive.com.au:510/shares/folder/fcec8ac83ff1ba/
	3.0	https://sync.netoverdrive.com.au:510/shares/folder/9150577efd6b01/
	3.3	https://sync.netoverdrive.com.au:510/shares/folder/1e08eedfdc577c/
	5.0	https://sync.netoverdrive.com.au:510/shares/folder/3e7e40ec34c0cb/
	15 / 20	Firmware: https://sync.netoverdrive.com.au:510/shares/folder/e30ffda534f178/ Power Limit: https://sync.netoverdrive.com.au:510/shares/folder/8c186aa77c3d8f/
RPI	H3	https://sync.netoverdrive.com.au:510/shares/folder/a0a4f891a77135/
	H3A/ H4A/ H5A	https://sync.netoverdrive.com.au:510/shares/folder/62f3e95439befc/
	Hybrid E5	https://sync.netoverdrive.com.au:510/shares/folder/1d1d213583a9c1/
	M6A/ M10A	https://sync.netoverdrive.com.au:510/shares/folder/5be1bf36da23e9/
	M15A/ M20A	https://sync.netoverdrive.com.au:510/shares/folder/1121d794c46c4b/
	M30A	https://sync.netoverdrive.com.au:510/shares/folder/d5c8723cb47900/
RPI FLEX	FLEX	DSP: https://sync.netoverdrive.com.au:510/shares/file/9edaac7ee6b00d/ COM: https://sync.netoverdrive.com.au:510/shares/file/1db9eca8b6c966/

Solivia



RPI



RPI FLEX



Updating Firmware Through RS485



Delta Solar System V5.0

Monitor Mode 1

RS485 2

Wi-Fi 3

Send Command

Single Broadcast

Sync Clock

Firmware 4

English

Grid Set(Load/Save)

Datalog



Help

Start ID 1

End ID 5 3a

Inverters

ID:001

- 1) Choose Inverter model
 - 1P H3_H5 Series
 - 1P Wifi Series
 - 3P M125 Series
 - 3P MxA_MxH Series
 - BX_6.0
 - Hybrid_E5
- 2) Choose COM Port that is connected to the inverter
 - COM10
 - COM10
- 3) Press the Play Button to start Communication 
- 3a) If the area that is populated is in red text, please click the Magnifying Glass 
- 4) Click Firmware

Updating Firmware Through RS485



Delta Solar System V5.0

Monitor Mode

RS485
Wi-Fi

Communication

Send Command

COM10

Single Broadcast

Sync Clock

Firmware

English

Delta

Grid Set(Load/Save)

Datalog

Help

Start ID 1
End ID 5

5 Upgrade

Inverters
ID:001

Product ID: ?? MetaBlock Version: ??
Start Address: ?? Hardware Version: ??
Stop Address: ?? Software Version: ??
Fill Value: ?? Processor: ??
Checksum: ?? Erase Size: ??
Baud Rate: ?? Program Size: ??
Delay: 6

Upgrade

FIRMWARE UPGRADE COMPLETED

Close

ID: 5 19200 Temper1... 1901 COM Open NoRx/Error:12/0 Idc:100; P:1; E:10; Iac:100; V:10 Type:0x0000 Ind- 1%, U

Type here to search

5) Select HEX files needed for the update. Start with DSP, then COMMS, then RED.

Note: Some have only 2 files to update.

6) Click upgrade and wait for the popup below. Repeat for other files.